



Item No. _____

C708 McD



Soft Serve Freezer

Single Flavor, Pump, Heat

Treatment

C708 McD



Features

Heat Treatment freezers address McDonalds system-wide concerns of labor, product waste, maintenance and repair costs. The Heat Treatment system provides a daily heating and cooling cycle to safely maintain dairy products up to two weeks before a complete disassembly and cleaning is required.

Freezing Cylinder

One, 3.4 quart (3.2 liter).

Mix Hopper

One, 20 quart (18.9 liter). Refrigerated to maintain mix below 41°F (5°C) in Auto and Standby modes. Simplified air/mix pump delivers the precise amount of air and mix to the freezing cylinder, and reduces operator parts.

Indicator Lights

Mix Low light alerts the operator to add mix. When the Mix Out light flashes, the unit automatically goes into Standby mode to prevent damage.

Touch Screen Controls

Microprocessor touch controls are embedded in durable tempered glass panel. Multiple languages are selectable. Viscosity is continually measured to serve consistent quality soft serve. Soft lock out features improve reliability. Temperatures in the hoppers or freezing cylinders may be displayed at any point of operation. History of temperatures and times during the last 366 heat cycles may be viewed from the fluorescent display.

Standby

During long no-use periods, the standby feature maintains safe product temperatures in the mix hopper and freezing cylinder.

Shown with optional features as configured for U.S. McDonald's/Wal-Mart locations (order C70833FWJM):

(Canadian version order C70833FWJN)

- Side Syrup Rail mounted on right (one heated, one room temperature)
- Front Syrup Rail-room temperature (requires cart with rear storage door)
- Top Air Discharge Chute included, but not shown



Optional Cart with front opening door (not available with front mount syrup rail)



Optional Top Air Discharge Chute

Rockton, Illinois 61072
Toll Free: 1-877-HELP-MCD
 Phone 815-624-8333 Fax 815-624-8000
www.taylor-company.com
 e-mail: helpmcd@taylor-company.com

ISO 9001:2008
 Registered Firm



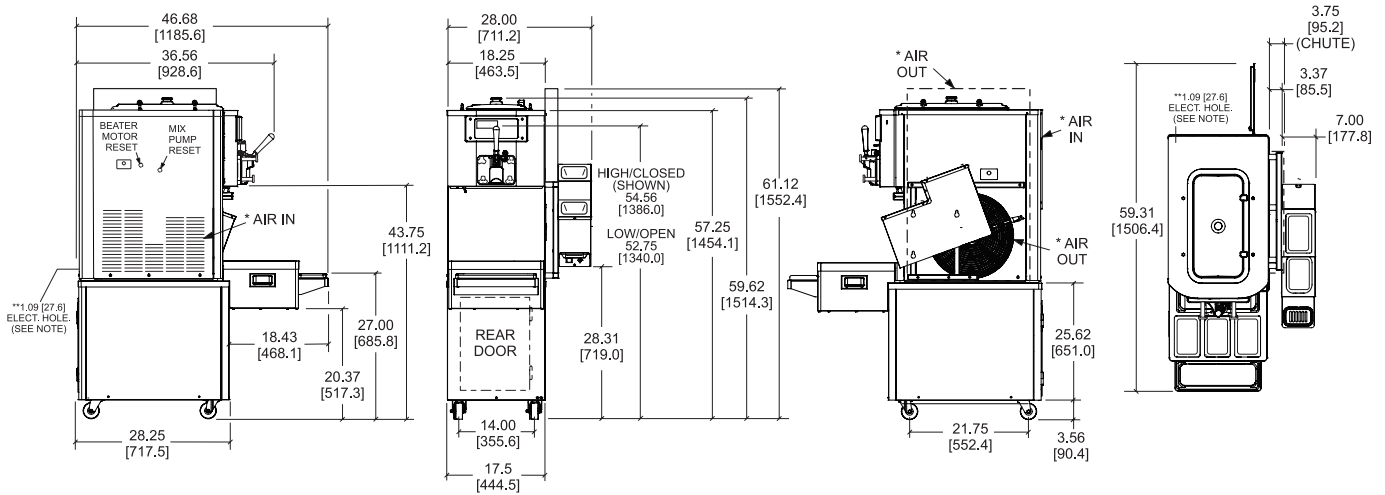
Standard 6



LISTED
SA2650



Selected 50 Hz. Models



NOTE: * AIR COOLED ONLY / **1.09 [27.6] ELECTRICAL HOLE AVAILABLE FOR TOP AIR DISCHARGE OR WATER COOLED UNITS ONLY. FIGURES IN BRACKETS INDICATE MILLIMETERS / DECIMAL AND FRACTIONAL DIMENSIONS EQUAL TO (PLUS OR MINUS 1/16 INCH [1.5mm]).

Weights	lbs.	kgs.
Net	600	272.2
Crated	750	340.2
	cu. ft.	cu. m.
Volume	66.5	1.88
Dimensions	in.	mm.
Width	28	711
Depth	46-11/16	1186
Height	61-1/8	1553
Floor Clearance	3-9/16	91

*Mounted on standard casters.

Electrical	Maximum	Minimum	Poles (P)
	Fuse Size	Circuit Ampacity	
208-230/60/1 Air	35	26	2P 3W
208-230/60/1 Water	35	25	2P 3W
208-230/60/3 Air	25	18	3P 4W
208-230/60/3 Water	20	17	3P 4W
220-240/50/1 Air	25	21	2P 3W
380-415/50/3N~ Air	12	9	4P 5W

This unit may be manufactured in other electrical characteristics and may have additional regulatory agency approvals. Consult the local Taylor Distributor for other electrical characteristics and agency approvals based on specific electrical and country requirements.

(For exact electrical information and approval marks, always refer to the data label of the unit.)

Continuing research results in steady improvements; therefore, these specifications are subject to change without notice.

Bidding Specs

Electrical: Volt _____ Hz _____ ph _____
 Neutral: Yes No Cooling: Air Water NA

Options: _____

Specifications

Electrical

One dedicated electrical connection is required. See the Electrical chart for the proper electrical requirements. Manufactured to be permanently connected. Consult your local Taylor distributor for cord & receptacle specifications as local codes allow.

Beater Motor

One, 1.5 HP.

Refrigeration System

One, 9,500 BTU/hr. R404A.

Air Cooled

Minimum 6" (152 mm) on both sides and place the back of the unit against a wall to prevent recirculation of warm air. Minimum air clearances must be met to assure adequate air flow for optimum performance.

Optional air discharge chute directs heated air exhaust upwards. No clearance required on right side if air discharge chute is used.

Water Cooled

Water inlet and drain connections on right side or under side of base, 3/8" FPT.

Options

- Cart with casters-height to top of hopper cover: 59-5/8" (1515 mm)
- Decals - Vanilla Cone
- Hopper Locks
- Legs - [increase height of unit by 4-1/4" (108 mm)]
- Syrup Rail (front mount requires special cart with rear door)
- Syrup Rail Kit (side mount)
- Top Air Discharge Chute (air cooled only)

Limited Warranty

Taylor Company warrants each freezer to be free of manufacturing defects for: (a) one (1) year on labor (see warranty/checkout card); (b) one (1) year on electrical and other parts designated as "103"; two (2) years on beater motor, electronic controls, and gear drive units designated as "212"; (d) five (5) years on refrigeration compressors and freezing cylinders designated as "512"; and (e) no warranty on wear items designated as "000"; in the Taylor manual. This warranty is valid only if required service work is provided by an authorized service agency. For further details, please contact your local Taylor distributor.

Authorized Taylor Distributor

REFLEX SERVICES
 IRIDIS - GROUPE
 ☎ 01.30.13.96.04
 ✉ equipe.commercial@iridis-groupe.com
 Consommables & Pièces détachées : www.iridis-groupe.com

TAYLOR®
 750 N. Blackhawk Blvd.
 Rockton, Illinois 61072
www.taylor-company.com