

Place this manual in the Toaster section of your Equipment Manual. Manufactured exclusively for McDONALD'S®

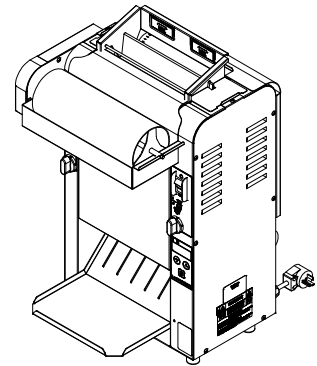
BY
ANTUNES & CO.
 180 KEHOE BLVD.
 CAROL STREAM, ILLINOIS 60188, U.S.A.
 PHONE: +1-630-784-1000
 TOLL FREE: +1-877-392-7854
 FAX: +1-630-784-1650
 www.antunes.com



VCT Family

Scan with mobile device or enter URL for product and service information.

<http://tiny.cc/ajaVCT>



Butter Wheel unit shown

TABLE OF CONTENTS

| | | | |
|---|----------|-----------------------------------|-----------|
| Owner Information | 2 | Changing Settings | 8 |
| General | 2 | Factory Reset | 8 |
| Warranty Information | 2 | Hi-Limit Reset Button | 9 |
| Service/Technical Assistance | 2 | Fault Codes | 9 |
| Specifications | 3 | Maintenance | 10 |
| Electrical Ratings & Plug Configurations..... | 3 | Daily Cleaning | 10 |
| Dimensions | 3 | Replacing the Belt Wraps | |
| Important Safety Information | 4 | (Every 3–6 Months)..... | 10 |
| Installation | 5 | Checking the Conveyor Belt Chains | |
| Unpacking..... | 5 | (Every 3–6 Months)..... | 11 |
| Equipment Setup | 5 | Checking the Roller Tensioners | |
| Assembling the Unit | 5 | (every 3–6 months) | 12 |
| Operation | 7 | Troubleshooting | 13 |
| Operating Instructions | 7 | Replacement Parts | 15 |
| Default Settings | 7 | Wiring Diagram | 21 |
| Light/Dark Setting | 7 | Notes | 22 |
| Viewing Settings | 8 | | |

LIMITED WARRANTY

Antunes provides the following limited warranty to the original purchaser of all McDonald's Equipment.

All components are warranted against defects in the material and workmanship for a period of two (2) years. If any part becomes inoperable during the period of this warranty, Antunes will pay labor costs to an Authorized Service Agent to replace the part plus travel expenses.

WARRANTY EXCLUSIONS

- The cost of installation.
- Equipment that has been damaged due to shipment. Purchaser should make damage claim directly upon carrier.
- Alteration, misuse, abuse.
- Improper storage or handling.
- Improper maintenance.
- Failure to follow proper installation instructions, including electrical connection.

- Improper or unauthorized repairs.
- Scheduled Maintenance procedures as outlined in your MRC Card.
- Consumables such as Grill Covers (Release Sheets), gaskets, Conveyor Belt Wraps, O-rings, removal of links, and light bulbs.
- Freight, foreign, excise, municipal, or other sales or use taxes.
- Consequential damages such as loss of profit, loss of time, the cost of repairing or replacing other property which is damaged, or any other incidental damage of any kind.

Antunes reserves the right to make changes in design or add improvements on any products. The right is always reserved to modify Equipment because of factors beyond our control and government regulation. Changes to Equipment do not constitute a warranty charge.

This warranty is exclusive and is in lieu of all other warranties, expressed or implied, including any implied warranty of merchantability or fitness for a particular purpose, each of which is expressly disclaimed. The remedies described above are exclusive, and in no event shall Antunes or any of its Divisions be liable for special consequential or incidental damages for the breach or delay in the performance of this warranty.

OWNER INFORMATION

General

This manual provides the safety, installation, and operating procedures. We recommend that all information contained in this manual be read prior to installing and operating the unit.

This unit is manufactured from the finest materials available, assembled to our strict quality standards, and tested at the factory to ensure dependable trouble-free operation.

Warranty Information

Please read the full text of the Limited Warranty printed on the front cover of this manual.

If the unit arrives damaged, contact the carrier immediately and file a damage claim with them. Save all packing materials when filing a claim. Freight damage claims are the responsibility of the purchaser and NOT covered under warranty.

The warranty does NOT extend to:

- Damages caused in shipment or damage as result of improper use.
- Installation of electrical service.
- Installation, calibration, or adjustment.
- Normal maintenance outlined in this manual.
- Consumable parts such as Egg Rings, gaskets, rubber feet, labels, O-rings, light bulbs, etc.
- Malfunction resulting from improper service or maintenance.
- Damage caused by improper installation, abuse, or careless handling.
- Damage from moisture getting into electrical components.
- Damage from tampering with, removal of, or changing any preset control or safety device.
- Damage caused by parts or components not provided by Antunes.

Service/Technical Assistance

If you experience any problems with the installation or operation of your unit, contact Antunes Technical Service at +1-877-392-7854 (toll free).

Fill in the information below and have it handy when calling Antunes Technical Service for assistance. The serial number is on the specification plate located on the side of the unit.

Purchased From: _____

Date of Purchase: _____

Model No.: _____

Serial No.: _____

Mfg. No.: _____

Use only genuine Antunes replacement parts in this unit. Use of replacement parts other than those supplied by the manufacturer will void the warranty.

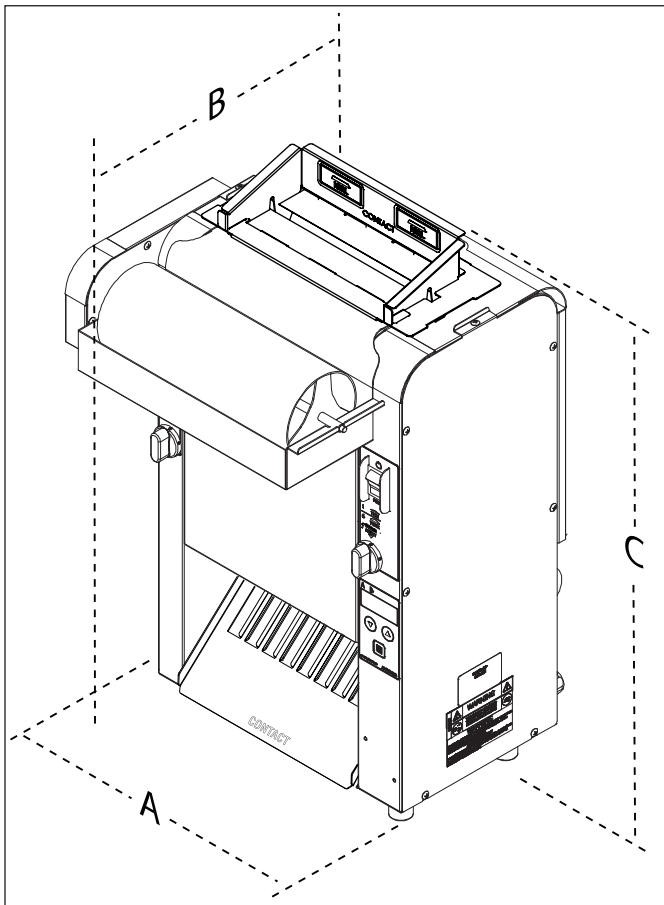
IMPORTANT! Keep these instructions for future reference. If the unit changes ownership, be sure this manual accompanies the equipment.

SPECIFICATIONS

Electrical Ratings & Plug Configurations

| Model & Mfg. Number | Volts | Watts | Amps | Hertz | Plug Description |
|--|---------|-------|-----------|-------|---|
| VCTM-2 9210910 (No Butter Wheel) | 208-230 | 3100 | 14.9/13.4 | 50/60 | IEC-309 Pin & Sleeve, 16 Amp., 250 Volt |
| VCTM-2 9210911 (Butter Wheel) | 208-230 | 3100 | 14.9/13.4 | 50/60 | IEC-309 Pin & Sleeve, 16 Amp., 250 Volt |

Dimensions



| Model & Mfg. No. | Width (A) | Depth (B) | Height (C) |
|--|---------------------|---------------------|---------------------|
| VCTM-2 9210910 (No Butter Wheel) | 14" (356 mm) | 15 1/2" (394 mm) | 25 1/2" (648 mm) |
| VCTM-2 9210911 (Butter Wheel) | 15 1/4" (387 mm) | 15 1/2" (394 mm) | 25 1/2" (648 mm) |

IMPORTANT SAFETY INFORMATION

In addition to the warnings and cautions in this manual, use the following guidelines for safe operation of the unit.

- Read all instructions before using equipment.
- For your safety, the equipment is furnished with a properly grounded cord connector. Do NOT attempt to defeat the grounded connector.
- Install or locate the equipment only for its intended use as described in this manual. Do NOT use corrosive chemicals in and/or on this equipment.
- Do NOT operate this equipment if it has a damaged cord or plug, if it is not working properly, or if it has been damaged or dropped.
- This equipment should be serviced by qualified personnel only. Contact Antunes Technical Service for adjustment or repair.
- Do NOT block or cover any openings on the unit.
- Do NOT immerse cord or plug in water.
- Keep cord away from heated surfaces.
- Do NOT allow cord to hang over edge of table or counter.
- Do NOT clean this appliance with a water jet.

The following warnings and cautions appear throughout this manual and should be carefully observed.

- Turn the unit off, wait for the cool-down procedure to complete its cycle, and disconnect the power cord before performing any service or maintenance on the unit.

NOTE: Turning off the power switch does NOT turn off all power to the unit. When the unit is plugged in and turned off, an LED light flashes to indicate that the power cord is plugged in.

WARNING

To avoid possible personal injury and/or damage to the unit, all inspections, tests, and repair of electrical equipment should be performed by QUALIFIED SERVICE PERSONNEL. The unit MUST be completely shut down and unplugged before any internal servicing, except when electrical tests are required. Use extreme care during electrical circuit tests. Live circuits will be exposed.

CAUTION

All electrical connections must be in accordance with local electrical codes and any other applicable codes.

CAUTION

Bread may burn. Therefore toasters must not be used near or below curtains or other combustible walls and materials. Failure to maintain safe operating distances may cause discoloration or combustion.

CAUTION

NEVER unplug the power cord while the unit is running! Use the proper shutdown procedure before unplugging the power cord.

WARNING

ELECTRICAL SHOCK HAZARD. FAILURE TO FOLLOW THE INSTRUCTIONS IN THIS MANUAL COULD RESULT IN SERIOUS INJURY OR DEATH.

- Electrical ground is required on this appliance.
- Do NOT modify the power supply cord plug. If it does not fit the outlet, have a proper outlet installed by a qualified electrician.
- Do NOT use an extension cord with this appliance.
- The toaster should be grounded according to local electrical codes to prevent the possibility of electrical shock. It requires a grounded receptacle with separate electrical lines, protected by fuses or circuit breaker of the proper rating.
- Check with a qualified electrician if you are unsure if the appliance is properly grounded.

INSTALLATION

Unpacking

1. Remove unit and all packing materials from shipping carton.
2. Open the included large box. It should contain the following (See Figure 2):
 - Bun Chute
 - Butter Wheel and Pan (Mfg. No. 9210911)
 - Bun Feeder
 - Two guttered Release Sheets
 - Platen Cleaning Tool
 - Owner's Manual
 - Maintenance Card
3. Remove all shipping tape and protective coverings from the unit and parts.

NOTE: Missing or damaged parts? Contact Antunes Customer Service at 1-877-392-7856 (toll free).

Equipment Setup

Before placing the toaster into service, pay attention to the following guidelines:

- Make sure power to the unit is off and the toaster is at room temperature.
- Do NOT block or cover any openings on the unit.
- Do NOT immerse cord or plug in water.
- Keep cord away from heated surfaces.
- Do NOT allow cord to hang over edge of table or counter.
- Connect the unit to the proper power supply. Refer to the specification plate for proper voltage.

Assembling the Unit

NOTE: The factory has pre-installed a Release Sheet over the Platen (Figure 2). Verify that it is properly in place before proceeding.

⚠ CAUTION ⚠

Failure to use Release Sheets may result in damage to the unit and loss of warranty coverage.

INSTALLING BUTTER WHEEL ASSEMBLY (MFG. NO. 9210911 ONLY)

1. For Butter Wheel units, remove the Butter Wheel and Pan from box.
2. Install the Pan over the front edge of the Heat Shield and place the Butter Roller in Pan and engage into gear case (Figure 2).
3. Fill the Butter Pan with Butter before toasting.

INSTALLING THE BUN CHUTE

1. If the unit is on, be sure to put on heat resistant gloves.
2. Insert the Bun Chute through the front of the unit according to Figure 1.
3. Hang the back of the Bun Chute on the rear Conveyor Cover hinge. When properly installed, the Bun Chute supports will be flush against the front of the unit (Figure 1).

NOTE: You may need to stand to the side of the unit to guide the Bun Chute into place from the front and rear using both hands.

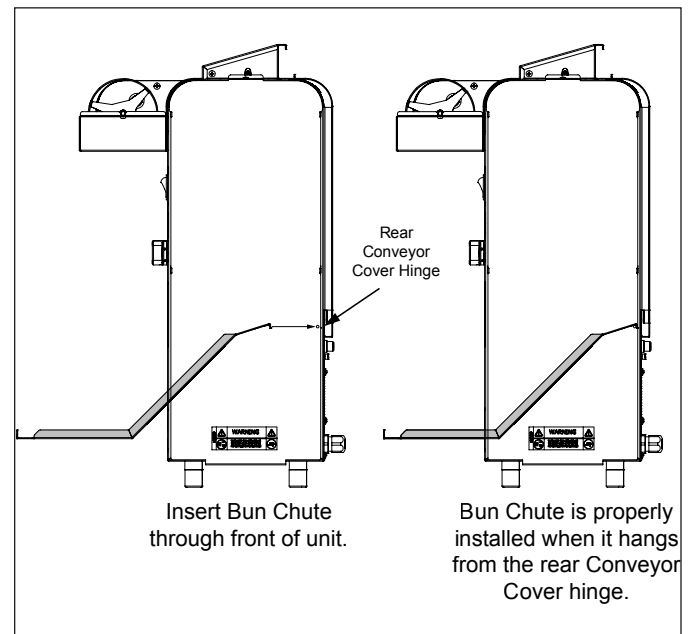


Figure 1. Installing Bun Chute

IMPORTANT: Make sure Heat Shield assembly is activating the Conveyor Interlock Switch (Figure 2). The conveyors will not rotate unless the Heat Shield is in place and Conveyor Interlock Switch is activated.

INSTALLATION (CONTINUED)

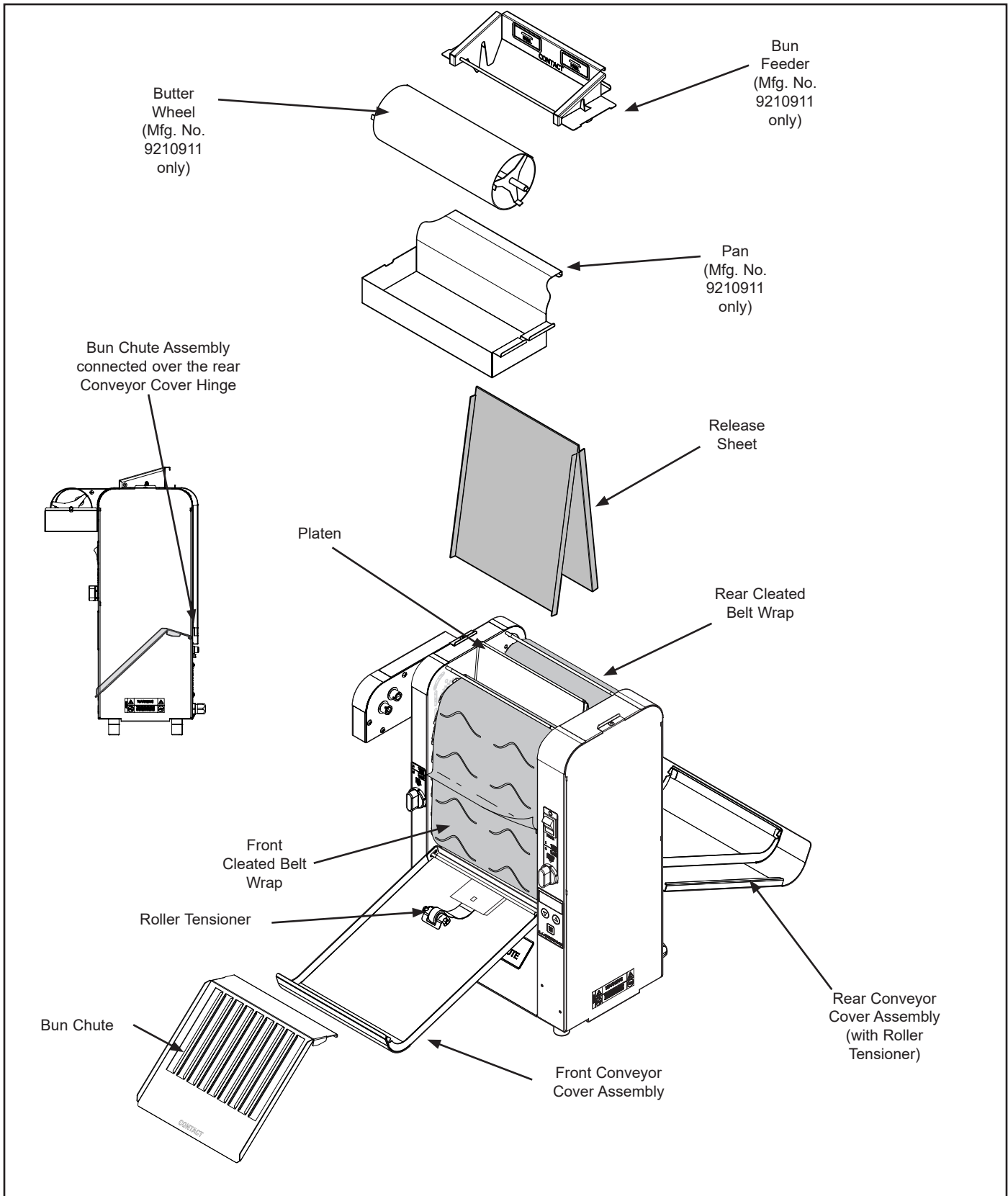


Figure 2. Components

OPERATION

Operating Instructions

1. Set the Bun Thickness Adjustment Controls (Figure 3).

NOTE: The McDonald's "Gold Standard" for toasting is the deciding factor on the finished product, not the Bun Thickness setting.

NOTE: The default Bun Thickness settings are 2 for Crown Front and 2 for Heel Rear, but settings are adjustable from 1-6. It is acceptable to adjust the Bun Thickness setting as needed to achieve the desired quality toast and bun compression.

2. Turn the power on and wait until the display reads USE before proceeding.

NOTE: The display (Figure 3) flashes "LO" during warm-up. "USE" appears when the toaster is ready for use.

3. Fill the Butter Pan (Mfg. No. 9210911 only).
4. Slide buns across the rotating Butter Wheel with the cut face down (Mfg. No. 9210911 only).
5. Drop buns into the Bun Feeder. Insert buns so they face the center platen. The cut sides of heel and crown must face each other and slide against the Release Sheet with Crowns inserted in the front and Heels inserted in the rear.
6. Toasted buns drop onto the Bun Chute (Figure 3).
7. Test at least 4 buns before putting the toaster into service.

Default Settings

RECOMMENDED TEMPERATURES

Refer to the table below for recommended settings.

| Mfg. Number | Platen A Setting | Platen B Setting | Speed Setting | Pass Through Time |
|------------------------------|--------------------|--------------------|---------------|-------------------|
| 9210910 (No Butter Wheel) | 293° C (560° F) | 218° C (424° F) | 255 | 22 Seconds |
| 9210911 (Butter Wheel) | 252° C (486° F) | 257° C (495° F) | 140 | 40 Seconds |

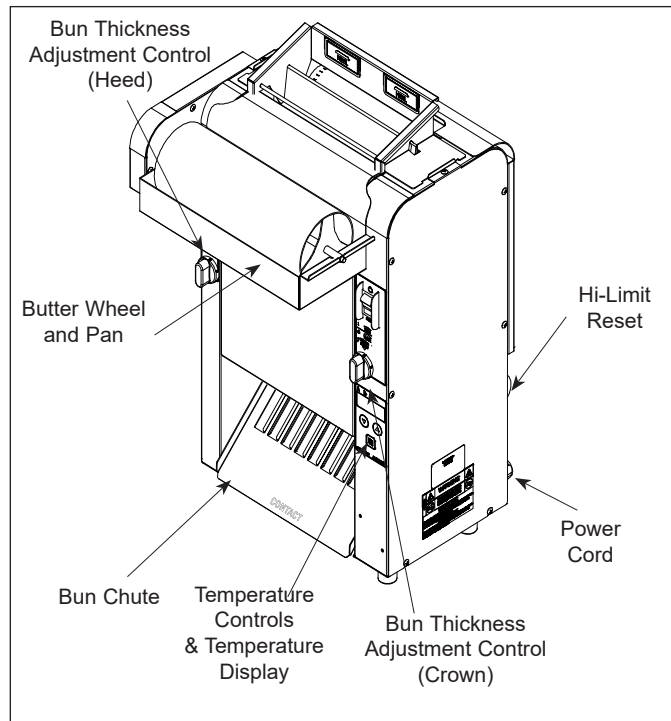


Figure 3. VCTM-2 Toaster

Light/Dark Setting

The toaster has a Light/Dark adjustment setting that allows you to adjust the toast quality as the toaster is running.

While the toaster is in USE mode, press the UP or Down arrow buttons to adjust the Light/Dark setting.

The default setting is D0.

Light 10 is the lightest setting

Dark 10 is the darkest setting.

OPERATION (CONTINUED)

Viewing Settings

To view the toaster settings press and hold the Menu button (Figure 4) for approximately 5 seconds. The unit beeps and shows the settings in the following order, displaying the value in column 1 first, then the actual setting.

| Display Shows | Setting Description |
|---------------|---|
| °A - ° F | A Platen current temperature* |
| b° - ° F | B Auxiliary heater current temperature* |
| SPEd | Speed of belts |
| Unit | Current temperature Unit |
| Er | Error Code |
| Et - d | Elapsed Time of toaster usage |
| Int ° F | Internal toaster Temperature |
| PL | Power Line Voltage |

* The first circles shown in these values represent the Platen indicator lights. The temperature unit will be shown as ° F or ° C depending on the Unit setting.

Changing Settings

The only settings that can be changed on the toaster are:

- A Platen setpoint temperature
- B Platen setpoint temperature
- Speed
- Unit

To change these settings, follow these steps.

1. With the toaster turned off, press and hold the Menu button and turn the toaster on. Continue holding the Menu button until the unit beeps and EnA appears on the display. Release the Menu button.
2. Press the Menu button again. The toaster shows °A - ° F (A Platen) and then shows the current A Platen setpoint value. Use the ▲ and ▼ buttons to change the value as needed.
3. Press the Menu button to move to the B Platen setting. Edit as needed.
4. Press the Menu button to move to the SPEd (Speed setting). Edit as needed.
5. Press the Menu button to move to the Unit setting. Edit as needed.

The settings are saved each time you press the Menu button and move to the next value. The toaster exits programming mode after 30 seconds of inactivity.

Factory Reset

To reset the toaster to the original factory settings:

1. Turn the toaster off.
2. Press and hold both the ▲ and ▼ buttons and turn the toaster on, continuing to hold the ▲ and ▼ buttons until the unit beeps and FR (Factory Reset) appears on the display.
3. Release the buttons.

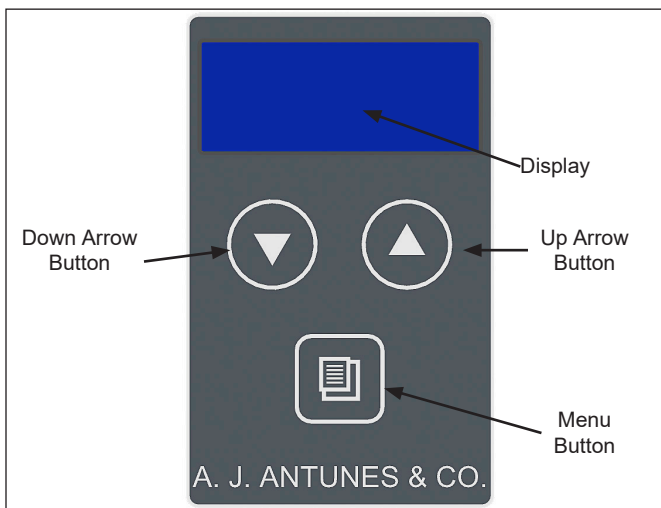


Figure 4. Control Panel and Display

Hi-Limit Reset Button

A Hi-Limit Control turns off power to the unit if it overheats. To reset the control, allow the unit to cool, then locate the Reset Button at the rear of the unit. Remove the black protective cap, press the Reset Button, and reinstall the protective cap (Figure 3).

NOTE: If the Hi-Limit requires continuous resetting, contact Antunes Technical Service.

OPERATION (CONTINUED)
Fault Codes

The table below describes error codes and the corrective action.

| Error # | Cause/Description | Corrective Action |
|----------------|--|--|
| 1 | Cannot communicate with thermocouple A/D converter (U3). Potentially failed PC Board Component. | Turn unit off and back on again. If error persists, this may indicate a failed PC Board component. Contact Antunes Technical Service for assistance. |
| 2 | Cannot detect power line zero cross. Potentially failed PC Board Component. | |
| 3 | Calibration check sum. Potentially failed PC Board Component. | |
| 4 | Microprocessor I2C buss communications error. Potentially failed PC Board Component. | |
| 5 | Microprocessor I2C buss communications error. Potentially failed PC Board Component. | |
| 6 | Cannot communicate with Fram (U9). Potentially failed PC Board Component. | |
| 7 | Cannot communicate with TMP75 (board temp sensor) (U4). Potentially failed PC Board Component. | |
| 8 | On-board voltage reference in thermocouple circuit failed (U1). Potentially failed PC Board Component. | |
| 9 | Not used. | Not Used |
| 10 | Board temp sensor exceeds 158° F. | Verify vents on toaster are unblocked and not near other heated appliances. If error persists, contact Antunes Technical Service for assistance. |
| 11 | Main Hi Limit tripped. | Reset Hi Limit, turn unit off and back on again. If error persists, contact Antunes Technical Service for assistance. |
| 12 | Cannot measure power line voltage Failed on-board transformer used for power control (T1). | Turn unit off and back on again. If error persists, contact Antunes Technical Service for assistance. |
| 13 | USB port voltage below 4.5V - Something plugged into USB port. | Remove anything connected to the USB port, turn unit off and back on again. Turn unit off and back on again. If error persists, contact Antunes Technical Service for assistance. |
| 14 | Main platen has not reached set point within 20 minutes. | Turn unit off and back on again. If error persists, contact Antunes Technical Service for assistance. |
| 15 | Main platen has exceeded 650° F. | |
| 16 | Main platen has fallen 50°F below set point after Ready state. | |
| 17 | Main thermocouple failed (open). | |
| 18 | Aux has fallen 50°F below set point after Ready state; will clear from display if temperature recovers; error is logged into memory. | Make sure front and rear covers are in proper position. Turn unit off and back on again. If error persists, contact Antunes Technical Service for assistance. |
| 19 | Auxiliary Heater exceeds 525° F. | |
| 20 | Auxiliary Heater does not reach set point within 20 minutes. | |
| 21 | Auxiliary thermocouple failed (open). | Turn unit off and back on again. If error persists, contact Antunes Technical Service for assistance. |
| 22 | Auxiliary Hi Limit (hardware circuit trips at 550°F which turns off contactor; ER22 then shows within 2 seconds). | Turn unit off and back on again. If error persists, contact Antunes Technical Service for assistance. |
| 23 | Cannot communicate with motor microprocessor (U13). | Turn unit off and back on again. If error persists, this may indicate a failed PC Board component. Contact Antunes Technical Service for assistance. |
| 24 | Motor stopped. | Make sure no buns are stuck in conveyors or any obstructions around conveyors. Turn unit off and back on again. If error persists, contact Antunes Technical Service for assistance. |

Figure 5. Fault Codes Table

MAINTENANCE

⚠ WARNING ⚠

Turn the power off, unplug the power cord before performing any service or maintenance.

Daily Cleaning

For daily cleaning steps refer to preventative maintenance card PR 75 for Non-Butter Wheel units or PR 74 for Butter Wheel units.

Replacing the Belt Wraps (Every 3–6 Months)

NOTE: Depending on toaster usage and how well they are cleaned daily, Belt Wraps should last between 3–6 months.

1. Turn the power off, unplug the power cord, and allow the unit to cool before proceeding.
2. Remove the Bun Feeder, Butter Wheel and Pan (if present), and Bun Chute and set aside (Figure 2). Set the Bun Thickness Compression Knobs to 6 & 6.
3. Open both Conveyor Covers and pull the Belt Wrap Pin out of the zipper on each belt wrap (Figure 6).
4. Disconnect the clips on the inside part of the Belt Wraps from the Conveyor Belt Chain.
5. Remove and discard the old Belt Wraps.
6. Wipe the new Belt Wraps with a clean, sanitizer-soaked towel. Allow to air dry.
7. Install the new Belt Wraps around the Conveyor Belt Chains inside the Support Rods with the zipper flap exposed and hanging down (Figures 6 & 7).
8. Attach the clips on the inside part of the Belt Wraps to the Conveyor Belt Chain.
9. Align the Belt Wrap teeth evenly and connect the ends of the Belt Wraps by inserting the Belt Wrap Pin.
8. Close the Conveyor Covers, set the Bun Thickness Compression Knobs back to their normal settings and reinstall the Butter Wheel and Pan (if present), Bun Feeder, and Bun Chute.



Figure 6. Installing Belt Wrap

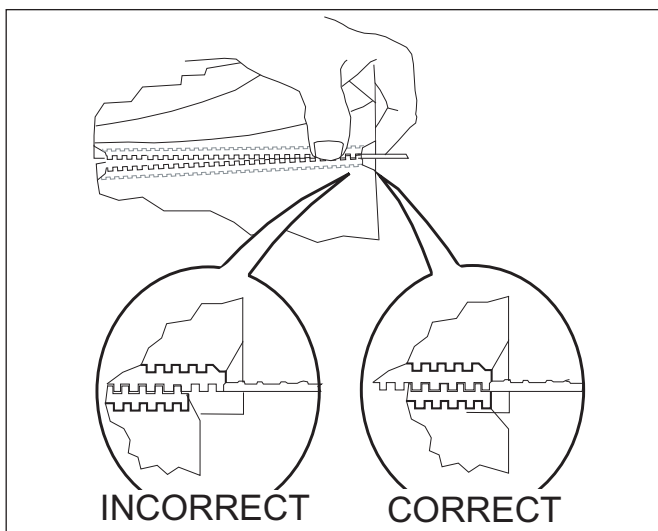


Figure 7. Aligning Belt Teeth

⚠ CAUTION ⚠

Align the ends of the Belt Wrap properly (Figure 9) or the Belt Wrap may be damaged.

⚠ CAUTION ⚠

Position the Belt Wrap **UNDER** the upper and lower support rods or damage to the unit may occur.

MAINTENANCE (CONTINUED)
**Checking the Conveyor Belt Chains
(Every 3–6 Months)**
MEASURING CONVEYOR BELT CHAINS

1. Turn the unit off, unplug the power cord, and allow the unit to cool.
2. Remove the Bun Feeder, Butter Wheel and Pan (if present), and Bun Chute (Figure 2). Set the Bun Thickness Compression Knobs to 6 & 6.
3. Open both Conveyor Covers.
4. Remove the Belt Wraps and set aside (Figures 7 & 8).
5. Facing the toaster, locate the approximate center-point of the Conveyor Belt Chain.
6. Pull the chain away from the edge of the toaster (Figure 8).
7. Measure the distance from the frame of the unit and the chain. A U.S. Dime (1.8 cm) can be used for the measurement (Figure 8).
8. If the gap is 2 times wider than the coin or larger than 3.6 cm, remove one 1/2" link as described below.
9. Disconnect the chain by squeezing any two links together and unhook the links from each other (Figure 9). Needle-nose pliers may be used.

NOTE: There are two small 1/2" links on each side of the Conveyor Belt Chain. The rest are large 3/4" links.

10. Remove one 1/2" link from the chain.
11. Reassemble the chain onto the sprockets as described in the *Replacing Conveyor Belt Chains* section of this manual.
12. Measure the gap again with the coin. The coin should fit snugly between the chain and frame.
13. Check the opposite side of the toaster using the same steps.
14. When finished, reassemble the unit and return to operation.

NOTE: If the ends of the Conveyor Belt Chain cannot be connected, remove an additional small 1/2" link and install a large 3/4" link in its place.

REPLACING CONVEYOR BELT CHAINS

1. Turn the power off, unplug the power cord, and allow the unit to cool before proceeding.

2. Remove the Butter Wheel and Pan (if present), and Bun Chute and set the Compression Control Knobs to 6 & 6.
3. Open both Conveyor Covers.
4. Remove both Belt Wraps and set aside.
5. Disconnect the Conveyor Belt Chain by squeezing any two links together and unhook both ends of one link (Figure 9). Repeat on other side.
6. Place the new chain on the top sprockets with hook ends down.

NOTE: The ends of the hooks must point down (Figure 9).

7. Wrap the chain around the top and lower sprockets. Hook both ends together. Repeat on other side.

NOTE: Install the Conveyor Belt Chains under the upper and lower Support Rods.

8. If the Belt Wraps are in good condition, reinstall. Otherwise install new Belt Wraps.
9. Close the Conveyor Covers, set the Bun Thickness Compression Knobs back to their normal settings and reinstall the Butter Wheel and Pan (if present), Bun Feeder, and Bun Chute.



Figure 8. Measuring Conveyor Belt Chain

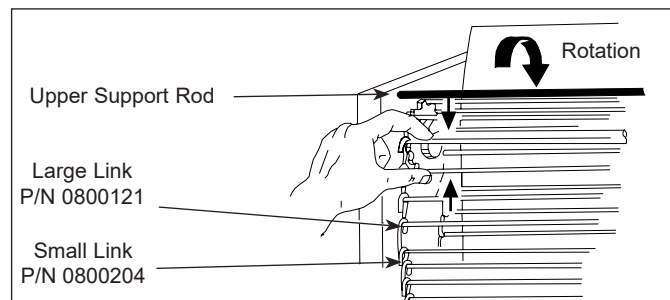


Figure 9. Removing Conveyor Belt Chain

MAINTENANCE (CONTINUED)

Checking the Roller Tensioners (every 3–6 months)

MEASURING THE ROLLER TENSIONERS

1. Measure the Roller Tensioner on both inner Conveyor Covers (Figure 10) using a U.S. Nickel.
2. The space between the inner Conveyor Cover and bottom of the Tensioner wheel should be $13/16$ " (2.1 cm) or the height of a U.S. Nickel.
3. Adjust or replace any damaged ones as recommended.

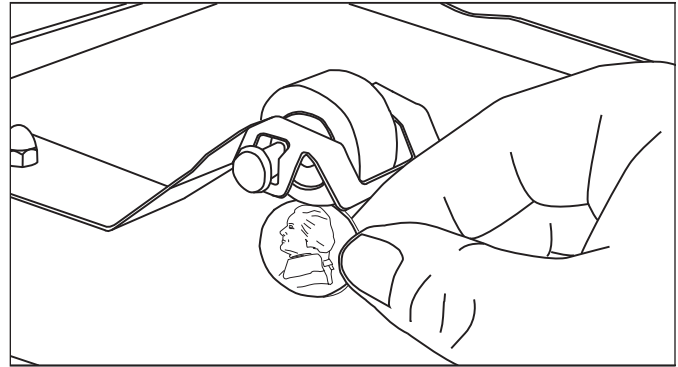


Figure 10. Measuring Roller Tensioner

REPLACING ROLLER TENSIONERS

1. Push down on retaining tab of the tensioner.
2. While keeping pressure on the retaining tab, slide the tensioner out of the retainer plate.
3. Replace the tensioner by sliding the new one into the retainer plate.

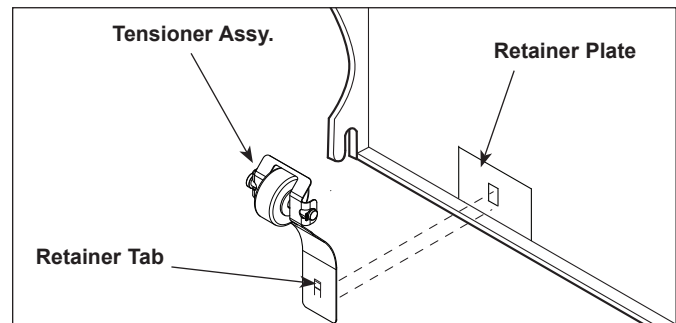


Figure 11. Replacing the Roller Tensioner

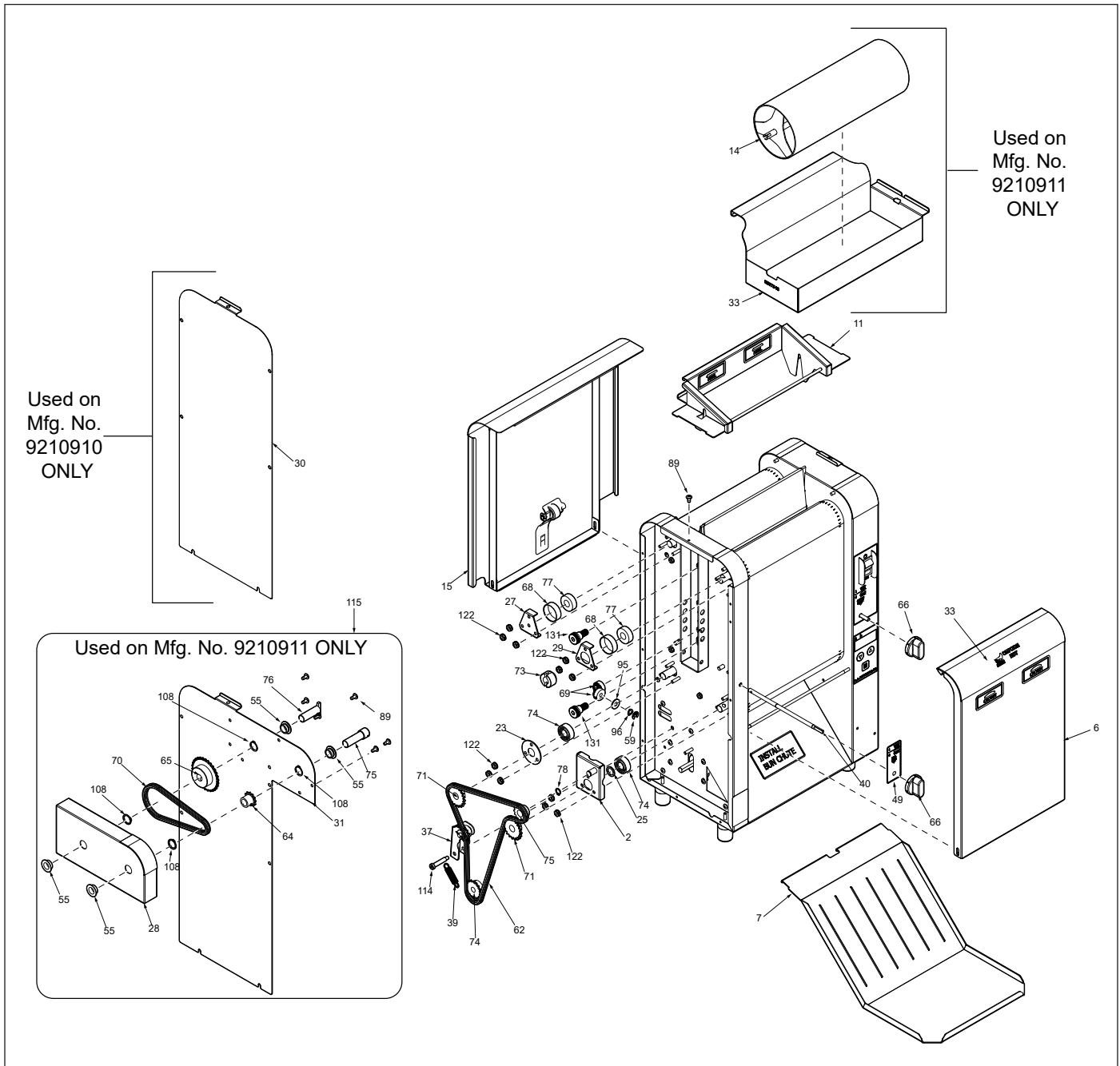
TROUBLESHOOTING

| Problem | Possible Cause | Corrective Action |
|---|--|---|
| No Control Display | Power cord not plugged in | Plug power cord into the proper electrical outlet. |
| | Circuit breakers turned off or tripped. Damaged electrical outlet, plug, or cord. Power switch damaged | Reset circuit breakers. If they trip again, check the power cord, plug, and outlet for damage. Contact Antunes technical service for assistance. |
| | Power Switch not turned on or is faulty. | Turn the unit off and then on again. If the problem persists, contact Antunes technical service for assistance. |
| | Faulty Transformer | |
| Conveyor does not rotate | Conveyor Belt/Chain has stretched. Chain skipping on sprockets. | Measure and adjust the conveyor belt chains as described in the Maintenance section of this manual. |
| | Loose setscrew on one of the drive sprockets | Contact Antunes Technical Service for assistance. |
| | Motor Drive Chain loose | Contact Antunes Technical Service for assistance. |
| | Internal part /object interfering within conveyor system | Check for interference & clear up as necessary. |
| Conveyor(s) skips or hesitates | Conveyor chains loose. | Measure and adjust the conveyor belt chains as described in the Maintenance section of this manual. |
| | Belt wrap clip not attached. | Verify both clips on each belt wrap are attached, reattach if necessary. |
| | Roller tensioner not adjusted properly. | Measure the roller tensioner and adjust if necessary. See the Maintenance section of this manual. |
| | Loose or misaligned sprocket | Contact Antunes Technical Service for assistance. |
| | Motor drive chain loose or stretched | Contact Antunes Technical Service for assistance. |
| | Drive motor(s) have failed | Contact Antunes Technical Service for assistance. |
| Buns not toasting adequately | Compression settings are incorrect. | Use recommended setting or adjust compression knobs as needed to achieve desired toast quality. |
| | Release sheet is worn or needs cleaning. | Inspect release sheet for cleanliness, worn spots, wrinkles, or tears. Clean or replace release sheet as described in the Maintenance section of this manual. |
| | Platen has butter (if butter wheel is present)/debris buildup. | Clean Platen as described in the Maintenance section of this manual. |
| | Light/Dark setting needs to be adjusted. | Adjust light/dark setting. See Operation section of this manual. |
| Crowns and/or Heels must be forced into the toaster. Buns sticking and burning. | Belt wraps are dirty, worn or damaged. | Clean or replace Belt Wraps as described in the Maintenance section of this manual. |
| | Platen has butter/debris buildup. | Clean Platen as described in the Maintenance section of this manual. |
| | Release sheet is dirty, worn or damaged. | Clean both sides or replace release sheet as described in the Maintenance section of this manual. |
| | Conveyor Chains loose. | Adjust the conveyor belt chains as described in the Maintenance section of this manual. |
| | Drive motor stalls intermittently. | Contact Antunes Technical Service for assistance. |
| | Compression settings are incorrect. | Use the recommended settings or adjust as needed to achieve desired toast quality. |
| | Buns are not inserted into the toaster properly. | Insert Crowns in front conveyor with and Heels in rear conveyor. Cut side of buns need to face the platen. |

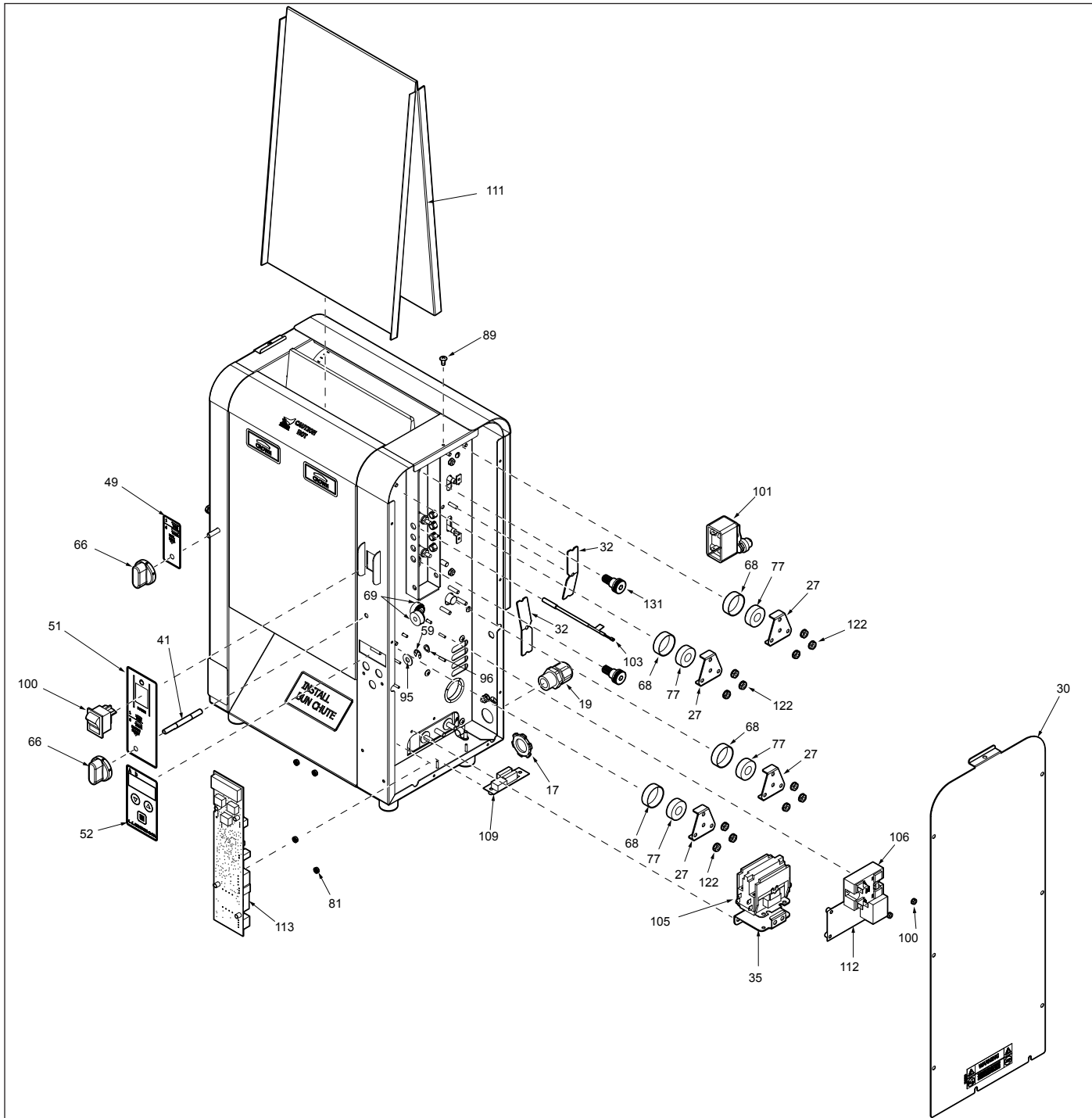
TROUBLESHOOTING (CONTINUED)

| Problem | Possible Cause | Corrective Action |
|---------------------------------------|--|---|
| Toaster making unusual sounds | Fan needs to be cleaned or replaced. | Clean fan as described in the Maintenance section of this manual or contact Antunes Technical Service for assistance. |
| | Conveyor belt chains have stretched or adjusted incorrectly. | Adjust the conveyor belt chains as described in the Maintenance section of this manual. |
| | Motor Drive chain needs lubrication. | Lubricate chain. |
| | Conveyor shaft bearing is binding. | Contact Antunes Technical Service for assistance. |
| Buns getting caught in bun chute area | Bun chute installed incorrectly | Reinstall Bun chute correctly. |
| Toaster displays ERR 10. | Internal temperature of control compartment exceeded 160° F. | Verify fan intake on back of toaster is clean, not blocked and has proper spacing. Clean cooling fan if needed, if not rotting, contact Antunes Technical Service. Check if cooling fan is functioning. If not, replace fan.. |

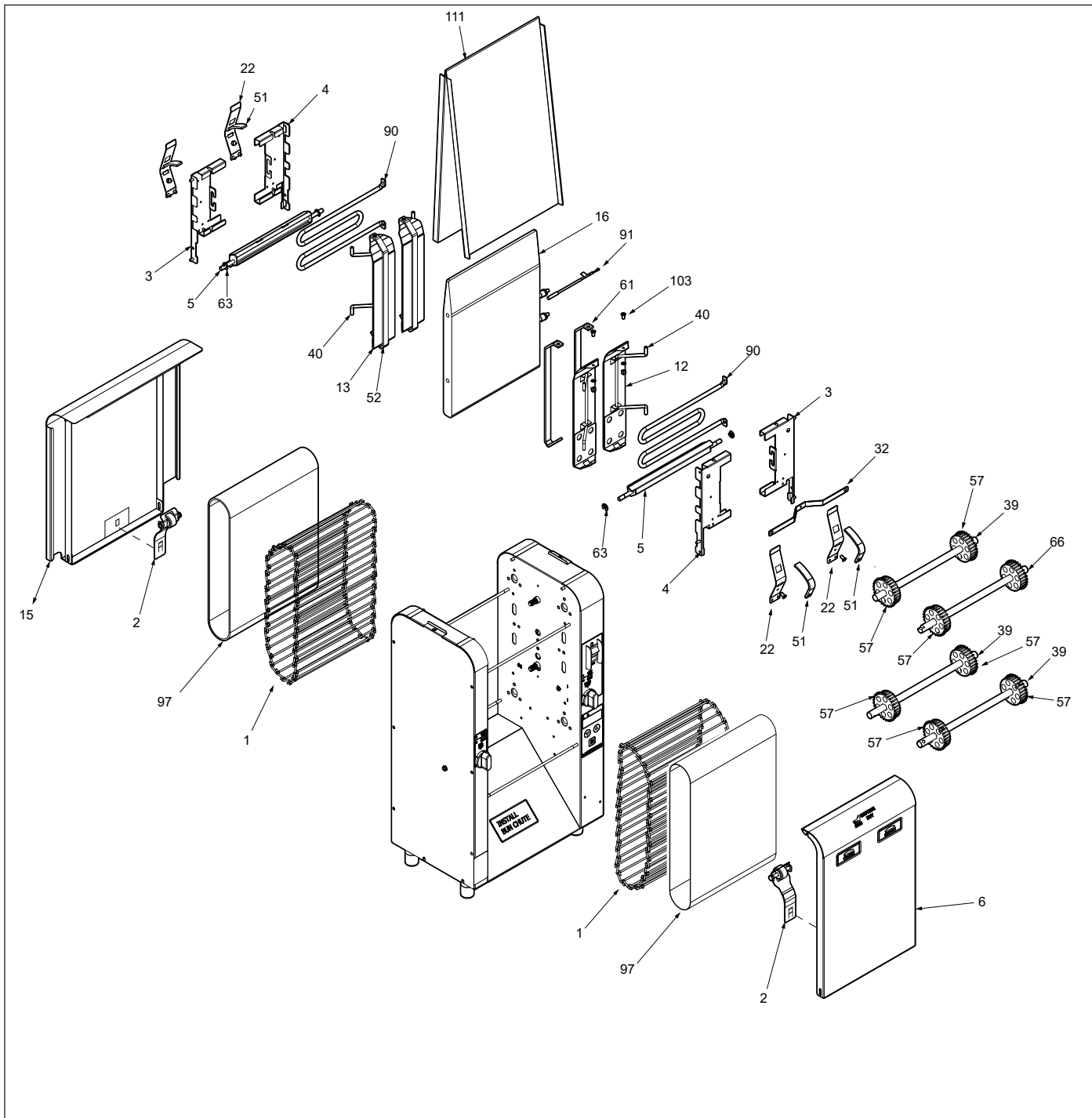
REPLACEMENT PARTS



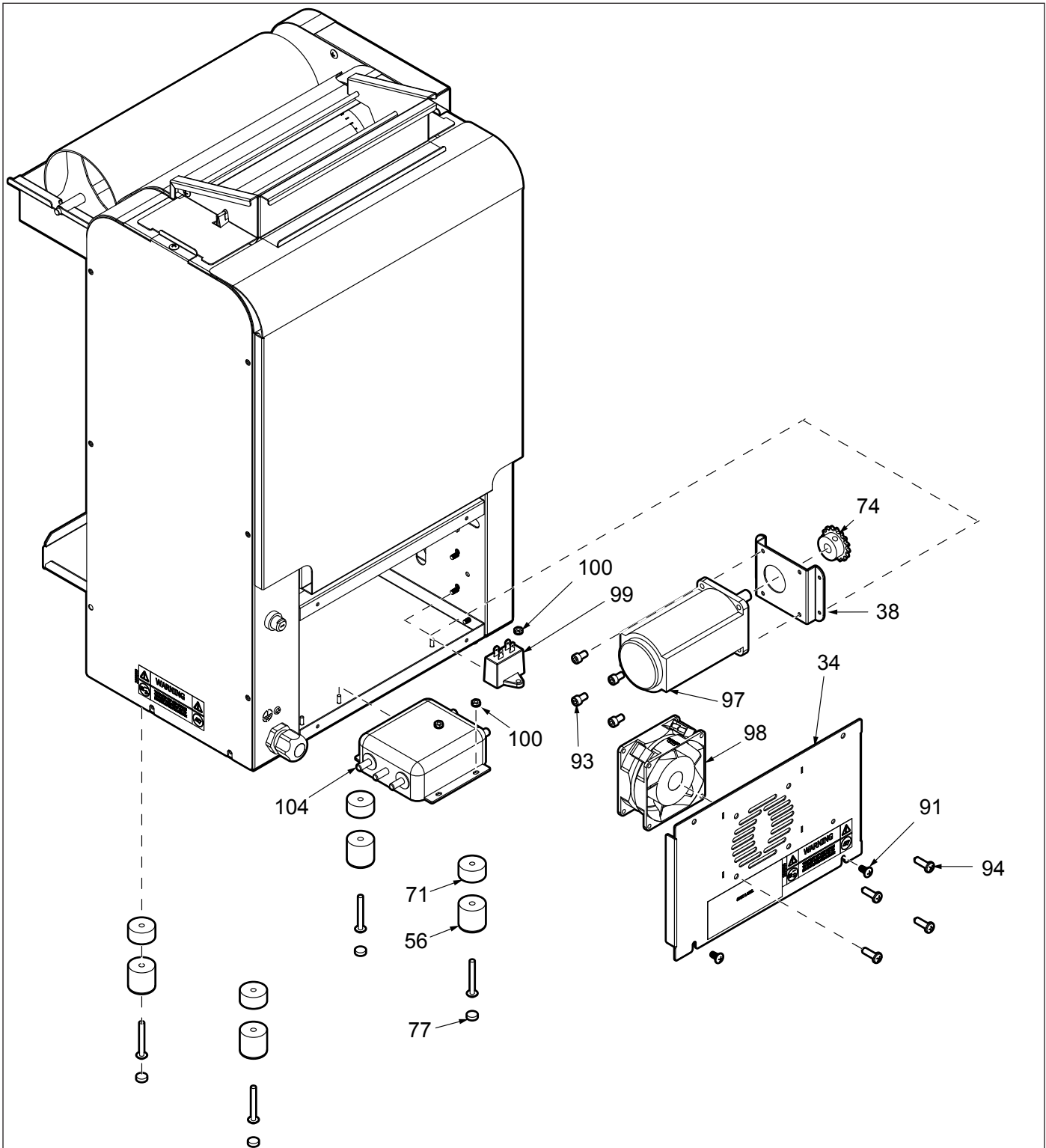
REPLACEMENT PARTS (CONTINUED)



REPLACEMENT PARTS (CONTINUED)



REPLACEMENT PARTS (CONTINUED)



REPLACEMENT PARTS (CONTINUED)

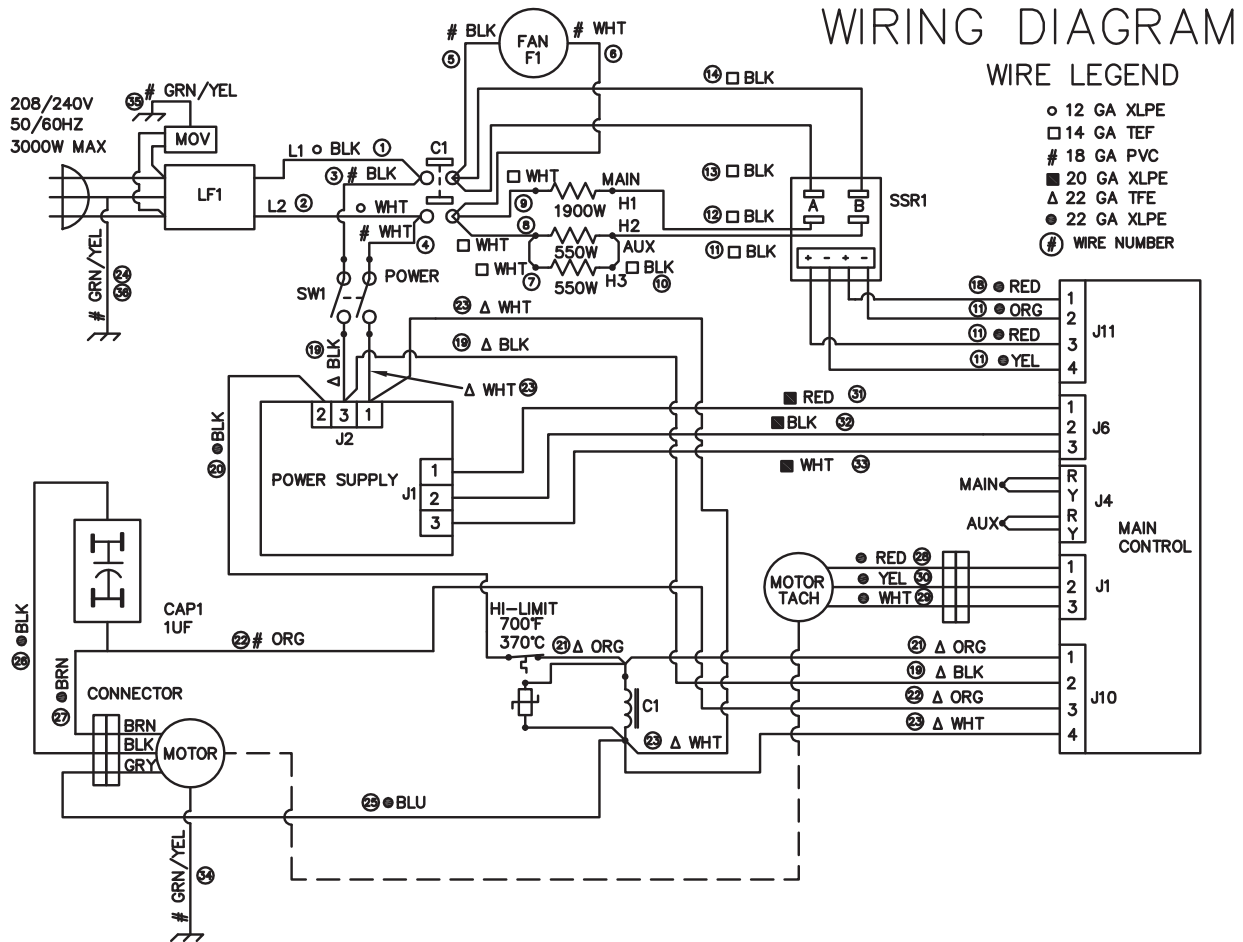
| Item | Part No. | Description | Qty. |
|------|----------|--|------|
| 1 | 0012982 | Conveyor Belt Assembly 37/2 | 2 |
| 2 | 0013373 | Roller Tensioner Assembly | 2 |
| 3 | 0021951 | Tensioner Bracket Weldment - Right | 2 |
| 4 | 0021952 | Tensioner Bracket Weldment - Left | 1 |
| 5 | 0021959 | Cam Weldment | 2 |
| 6 | 0021961 | Conveyor Cover Weldment | 1 |
| 7 | 0022186 | Bun Chute Weldment | 1 |
| 8 | 0022194 | End Hsg Weldment | 1 |
| 9 | 0022195 | Control Housing Weldment | 1 |
| 10 | 0022295 | Base Weldment | 1 |
| 11 | 0022296 | Bun Feeder Weldment | 1 |
| 12 | 0022297 | Weldment, Slide Shield - Crown | 2 |
| 13 | 0022298 | Weldment, Slide Shield - Heel | 2 |
| 14 | 0022299 | Weldment, Butter Wheel Roller (Mfg. No. 9210911 Only) | 1 |
| 15 | 0022300 | Weldment , Conveyor Cover Rear | 1 |
| 16 | 0100295 | Platen, Grill 200V/1900W | 1 |
| 17 | 0400138 | Lock-Nut, Conduit-1/2" Npt | 1 |
| 18 | 0400265 | Bushing, Shorty 3/8" | 4 |
| 19 | 0400315 | Strain Relief-Cord Connector | 1 |
| 20 | 0400432 | Bushing, Open/Closed | 1 |
| 22 | 0503495 | Bracket, Retainer Right | 2 |
| 23 | 0503497 | Bracket, Tensioner-Left | 1 |
| 24 | 0503507 | Bracket, Retainer Left | 2 |
| 25 | 0504321 | Spacer 0.503 X 0.69 X 0.06" | 1 |
| 26 | 0505968 | Spring, Inner Tensioner | 4 |
| 27 | 0506755 | Retainer, Bearing | 5 |
| 28 | 0507327 | Butter Wheel Housing (Mfg. No. 9210911 Only) | 1 |
| 29 | 0507500 | Retainer, Bearing | 1 |
| 30 | 0707507 | Panel, Control (Mfg. No. 9210910 Only) | 1 |
| 31 | 0507508 | Panel, End Housing (Mfg. No. 9210911 Only) | 1 |
| 32 | 0507509 | Aux. Heater Retainer Clip | 2 |
| 33 | 0507546 | Pan, Butter (Mfg. No. 9210911 Only) | 1 |
| 34 | 0507556 | Panel, Electrical | 1 |
| 35 | 0507557 | Bracket, Contactor | 1 |
| 36 | 0507558 | Bracket, Thermocouple | 1 |
| 37 | 0507559 | Chain Tensioner Bracket | 1 |
| 38 | 0507560 | Motor Mounting Bracket | 1 |
| 39 | 0600143 | Spring, Compression Setting | 1 |
| 40 | 0800455 | Rod, Knob (Heel) | 1 |
| 41 | 0800457 | Rod, Knob (Crown) | 1 |
| 42 | 0800458 | Rod, Support | 4 |
| 43 | 0800459 | Rod, Bun Feeder | 1 |
| 44 | 0800460 | Shaft, Drive | 2 |
| 45 | 0800900 | Rod, Pivot, 3/16 O.d. | 2 |
| 46 | 1000900 | Label - Warning | 1 |
| 47 | 1001181 | Label, Crown | 2 |
| 48 | 1001551 | Label, Install | 1 |
| 49 | 1001552 | Label, Cam (Heel) | 1 |

| Item | Part No. | Description | Qty. |
|------|----------|---|------|
| 50 | 1001556 | Label, Wiring Diagram | 1 |
| 51 | 1002654 | Label, Crown Compression | 1 |
| 52 | 1002655 | Label, Control | 1 |
| 53 | 1031215 | Spec Label | 1 |
| 54 | 1070013 | QR Label | 1 |
| 55 | 2070135 | Coupler (Mfg. No. 9210911 Only) | 4 |
| 56 | 2100230 | Bumper, Recess W/Washer | 4 |
| 57 | 2100259 | Rail, Slide | 4 |
| 58 | 2100359 | Rail, Slide | 2 |
| 59 | 2110127 | Ring, Retaining | 4 |
| 60 | 2120210 | Spacer 0.503 X 0.690 X 0.532 | 1 |
| 61 | 2150179 | Sprocket, 25B14 1/2" Bore | 1 |
| 62 | 2150187 | Chain, Drive | 1 |
| 63 | 2150190 | Sprocket, 25B28 1/2"Bore Stepped Tooth | 8 |
| 64 | 2150212 | Sprocket, 25B12 1/2" Bore (Mfg. No. 9210911 Only) | 1 |
| 65 | 2150214 | Sprocket, 25B30, 1/2" Bore (Mfg. No. 9210911 Only) | 1 |
| 66 | 2150250 | Bearing, Flanged | 1 |
| 67 | 2150251 | Sprocket, 25B14 3/8" Bore | 1 |
| 68 | 2150260 | Bearing Sleeve | 6 |
| 69 | 2150368 | Miter Gear, 20° Pressure Angle | 4 |
| 70 | 2150401 | Chain, Drive (64 Links) (Mfg. No. 9210911 Only) | 1 |
| 71 | 2150413 | Sprocket, 25B20 1/2" Bore | 2 |
| 72 | 2150414 | Shaft, Idler | 1 |
| 73 | 2150415 | Coupler | 1 |
| 74 | 2150418 | Sprocket, 25B16 3/8" Bore | 1 |
| 75 | 2150419 | Assembly , Idler Shaft (Mfg. No. 9210911 Only) | 1 |
| 76 | 2150420 | Shaft, Drive (Mfg. No. 9210911 Only) | 1 |
| 77 | 2180145 | Cover, Bumper | 4 |
| 78 | 300P124* | Ring, Retaining 3/8" | 1 |
| 79 | 303P115* | Cotter Pin-1/16" | 1 |
| 80 | 303P133* | Pin, Clevis | 1 |
| 81 | 304P105* | Nut, Hex 'Keps' #4-40 | 1 |
| 82 | 306P102* | Washer, Int. Tooth #6 | 1 |
| 83 | 306P105* | Screw, Mach. #6-32 X 1/2" | 1 |
| 84 | 308P102* | Washer, Int. Tooth #8 | 1 |
| 85 | 308P115* | Screw, Mach. #8-32 X 3/8" | 1 |
| 86 | 308P124* | Screw, Mach One-Way #8-32 | 1 |
| 87 | 308P143* | Nut, Hex 'Keps' #8-32 | 1 |
| 88 | 308P145* | Nut, Hex Acorn #08-32 Low Crown | 1 |
| 89 | 308P157* | Screw, Tap 8-32 X 3/8"Lg | 1 |
| 90 | 308P181* | Scr, Mach #8-32 X 3/8" Phfithd | 1 |
| 91 | 308P203* | Screw, Tap 8-32 X 3/8" W/Int. Tooth Washer | 1 |
| 92 | 310P180* | Screw, Mach. #10-32 X 1-3/4" | 1 |
| 93 | 310P199* | Scr, #10-32 X 3/8 Lg Socket Hd Cap | 1 |
| 94 | 310P213* | Screw, Phpnhd #10-16 X 3/4" | 1 |

REPLACEMENT PARTS (CONTINUED)

| Item | Part No. | Description | Qty. |
|---|----------|---|------|
| | | Thrd Form | |
| 95 | 325P104* | Washer, Flat 1/4" S/S | 1 |
| 96 | 325P203* | Washer, Spring Steel Single-Wave | 1 |
| 97 | 4000186 | Motor, 230V | 1 |
| 98 | 4000202 | Fan, Axial - 230V, Metal Housing & Imp | 1 |
| 99 | 4010221 | Cap-Mp, Motor Run | 1 |
| 100 | 4010245 | Switch, Rocker | 1 |
| 101 | 4030352 | Thermostat, Hi-Limit 700°F | 1 |
| 102 | 4030455 | Aux Heater, 200Vac, 550W | 2 |
| 103 | 4050214 | Thermocouple Type "K" (Open End) | 1 |
| 104 | 4050229 | Line Filter | 1 |
| 105 | 4050236 | Contacto, 2 Pole No | 1 |
| 106 | 4050240 | Relay, Solid State Dual Pole W/Conn-Recept | 1 |
| 107 | 4060234 | Wire Strap - 3/8" | 1 |
| 108 | 4060466 | C-Clip (Mfg. No. 9210911 Only) | 4 |
| 109 | 4070154 | Varistor Board | 1 |
| 110 | 7001158 | Black Wavy Silicone Belt | 1 |
| 111 | 7001168 | Platen Cover Sheet (3 pack) | 1 |
| 112 | 4070238 | Asy-PCB, VCT Mini Power Board | 1 |
| 113 | 4070240 | Asy-PCB, VCT Mini Control Board | 1 |
| 114 | 3100228 | SCR, SHLDR #10-32 x 1.125 | 1 |
| 115 | 0013313 | End Housing Cover Assembly (Mfg. No. 9210911 Only) | 1 |
| 116 | 0507322 | Cleaning Tool (Mfg. No. 9210911 Only) | 1 |
| * Items available in packages of 10 (ten) | | | |

WIRING DIAGRAM





Corporate Headquarters

Carol Stream, Illinois
Phone: +1 (630) 784-1000
Toll Free: +1 (800) 253-2991
Fax: +1 (630) 784-1650

China Facility

Suzhou, China
Phone: +86-512-6841-3637
Fax: +86-512-6841-3907